



## Aldenham Court

Edgware

£200,000

50% SHARED OWNERSHIP.

A top floor (with lift) flat available chain free with Davidson Frost-Wellings.

The flat has two double bedrooms, a large family bathroom plus an L-shaped, open-plan kitchen and living room with doors leading to a spacious, covered, West-facing balcony. The flat has floor to ceiling windows and comes with gated off-street parking and a bike store.

Leasehold with approximately 116 years remaining.  
Service charge of approximately £2980.80 per annum.  
Ground rent of £300 per annum.  
Barnet Council Tax Band E.

### Viewing

Please contact our Davidson Frost-Wellings Office on 020 8954 8806 if you wish to arrange a viewing appointment for this property or require further information.

- Two bedrooms
- Top floor flat
- Large balcony
- Chain free
- Modern development
- Off street parking



2



1

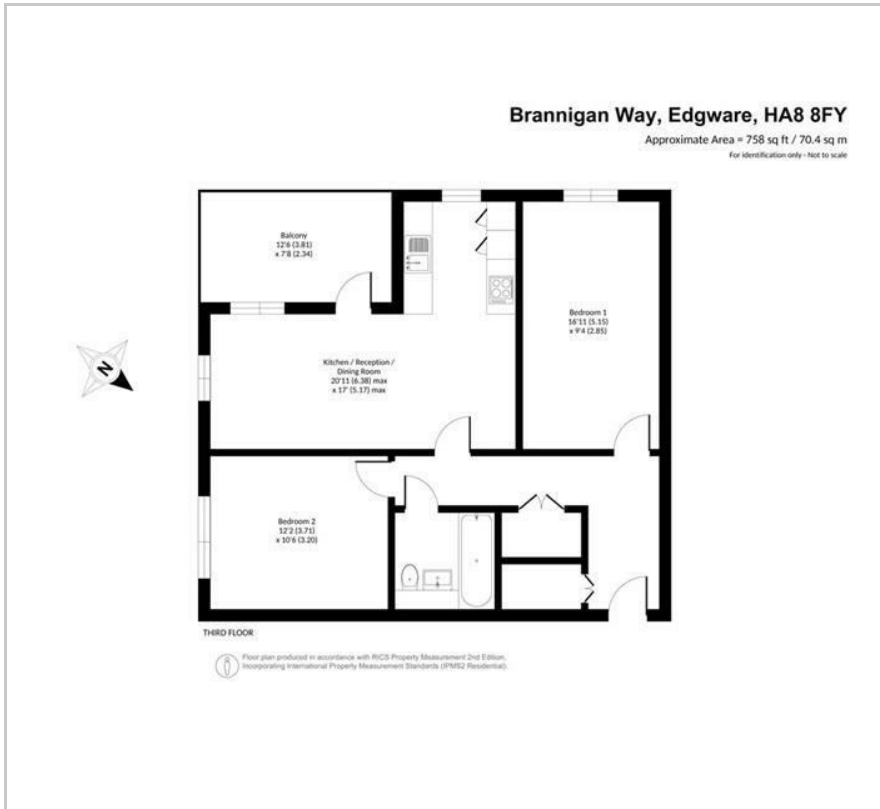


1

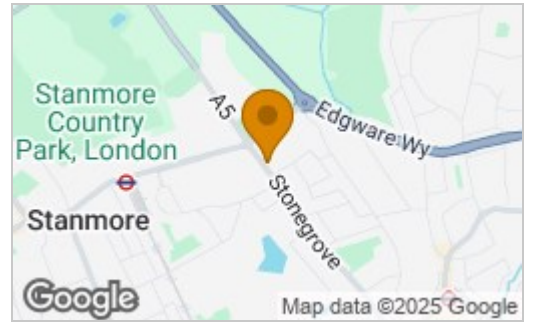


B

## Floor Plan

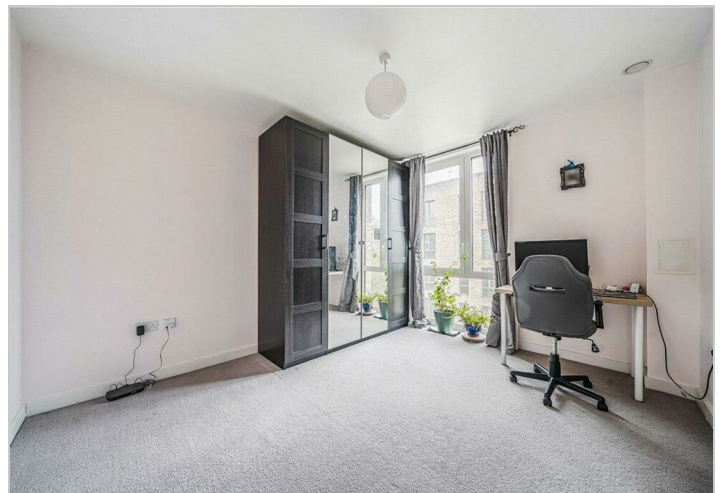
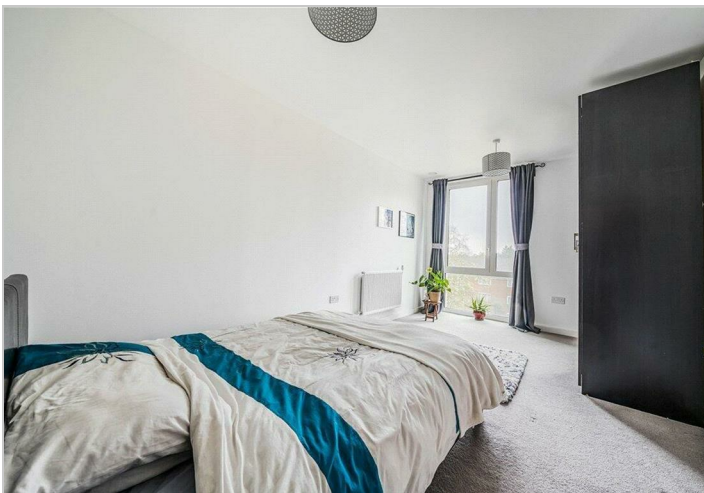
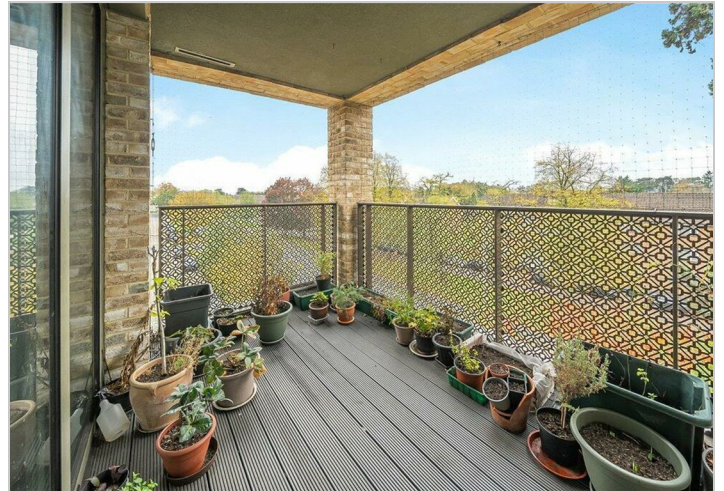


## Area Map



### Energy Efficiency Rating

	Current	Potential
Very energy efficient - lower running costs		
(92 plus) <b>A</b>		
(81-91) <b>B</b>	<b>82</b>	<b>82</b>
(69-80) <b>C</b>		
(55-68) <b>D</b>		
(39-54) <b>E</b>		
(21-38) <b>F</b>		
(1-20) <b>G</b>		
Not energy efficient - higher running costs		
<b>England &amp; Wales</b>	EU Directive 2002/91/EC	



These particulars, whilst believed to be accurate are set out as a general outline only for guidance and do not constitute any part of an offer or contract. Intending purchasers should not rely on them as statements of representation of fact, but must satisfy themselves by inspection or otherwise as to their accuracy. No person in this firm's employment has the authority to make or give any representation or warranty in respect of the property.